

# **PARIBHASHA PRAKARANA TERMINOLOGY**

PAPER-I TOPIC 2

**PRESENTED BY**

**Dr.Priyanka Sharma**

**Associate Professor**

**Dept. of RS & BK, MJF AYURVEDA MAVIDYALAYA,JAIPUR**

CO1	Explain the term Paribhasha and its importance in Ayurvediya Aushadhi Nirmana.	PO1, PO5, PO7
CO1	Discribe the terms Aushadha, Bheshaja, Kalpana, Kashaya, Kashaya yoni, Samskara- based on their word derivations	PO1, PO5, PO7
CO1	Enlist sequentially - names of all drugs classified in the varga(group). Recite shlokas of Maharasa, Uprasa , Sadharana Rasa Varga from Rasaratnasamuchchaya.	PO1, PO5, PO7
CO1	Enlist and discuss Sandigdha, Krutrima, Pratinidhi and Anupalabdha dravya.	PO1, PO5,

CO1,CO2	Discribe the definition of the term Shodhana. Explain with examples different techniques used for the procedures of Shodhana.	PO1,PO5, PO7
CO1	Explain the term Marana and describe its types with examples	PO1,PO5, PO7
CO1	Enlist all relevent prakriya paribhasha of Amrutikarana, Lohitikarana,Sattvapatana, druti and discuss with examples	PO1,PO5, PO7
CO1,CO2	Recite sequentially names of Parada Ashta samskara. Explain the terms Jarana Murchchhana and cite types with examples. Compare Jarana and Murchchhana.	PO1,PO5, PO7

# SPECIFIC LEARNING OBJECTIVES

By the End of the Class, You Will Be Able to :

1. DEFINATION & IMPORTANCE OF PARIBHASHA
2. WORD DERIVATION -AUSHADHA/BHESHAJA/KASHAYA....
3. DRAVYA /VARGA PARIBHASHA-
  - I .MAHARASA ,UPARA,SADHARANA RASA.....
  - II. SANDIGHDHA/ANUPLABDHA/KRUTRIMA/PRATINIDHI
4. PRAKRIYA PARIBHASHA-SHODHANA,MARANA,PARADA  
PRAKRIYA
5. PRAMANIKARANA PARIBHASHA(TERMS OF STANDARDIZATION)
6. PURAKA PARIBHASHA(SUPPLEMENTARY)
7. MANA PARIBHASHA

# DEFINATION & IMPORTANCE OF PARIBHASHA

## परिभाषा

- निगृढनुक्तलेशोक्तसंदिग्धार्थ प्रदीपिका। सनिश्चितार्था विबुधैः परिभाषा निगद्यते। (र.त.22)
- जिन सांकेतिक शब्दोंद्वारा शास्त्र के गूढ, अप्रकट, किंचित प्रकट तथा संदिग्ध अर्थ का स्पष्ट और निश्चित अर्थ ज्ञात हो, उसे परिभाषा कहते हैं। गूढ शब्दों का ज्ञान परिभाषा से ही होता है।
- अव्यक्तानुक्तलेशोक्तसंदिग्धार्थप्रकाशिकाः। परिभाषाः प्रकथयन्ते दीपीभूताः सुनिश्चिताः। (परिभाषा प्रदीपः)
- जो शब्द अव्यक्त, अनुक्त, लेशोक्त, अथवा संदिग्धार्थ होते हैं, उन शब्दों पर प्रकाश डालने वाली जो व्याख्याय होती है, उन्हें परिभाषा कहते हैं।
- कथते सोमदेवेन मुग्धवैद्यप्रबुद्धे। परिभाषा रसेन्द्रस्य शास्त्रः सिद्धेश्च भाषिता।। (र. र.स.8/)
- परिभाषाध्यायमादाँ योडधीते रससाधकः। रसत्त्वं विज्ञाने न स मुह्यति कुत्रचित्।। (र.तर)
- रसशास्त्र की विभिन्न प्रक्रियाओं को आरम्भ करने से पहले रसशास्त्र की परिभाषाओं का ज्ञान होना अतिआवश्यक है। जिससे रसशास्त्र के गूढ अर्थोंका ज्ञान होने में कोई कठिनाई का सामना नहीं करना पड़े।

# DRAVYA PARIBHASHA

अनेनोपदेशेन नानौषधिभूतं जगति किञ्चिद्द्रव्यमुपलभ्यते  
तां तां युक्तिमर्थं च तं तमभिप्रेत्य॥१२॥

२६. आत्रेयभद्रकाप्यीयोऽध्याय

तत् पुनस्त्रिविधं प्रोक्तं जङ्गमौद्भिदपार्थिवम् [१] ।

## CONCEPT OF CLASSIFICATION OF RASA DRAVYAS

- Rasa drugs are classified into various groups viz; maharasa, uparasa, sadharana rasa etc.
- 'Rasa' means Mercury, as such the term 'Rasa' denotes any drug mentioned or used in the mercurial system like abhraka, gandhaka. These are useful in the Samskara of Mercury.
- The classification of Rasa dravyas into Maharasa, uparasa, sadharana rasa is one important classification given by Rasavagbhata, the author of *Rasa Ratna Samucchaya*.
- These terms indicate that the drugs classified into maharasa are frequently used or more significant ones in the processing of mercury and those in uparasa group are of lesser importance than maharasa and sadharana rasa drugs are of lesser importance than the other two groups.

## MAHARASA

- Maharasa is group of mainly 8 drugs, different authors have taken different drugs in their classification.
- Most common classification used widely in rasashastra is of Rasavagbhata.

अभ्रवैक्रान्तमाक्षीकविमलाद्रिजसस्यकम् ।  
चपलो रसकश्चेति ह्यारवाऽष्टौ सङ्गहेद्रसान्

RRS 2/1

Abhraka, Vaikranta, Makshika, Vimala, Shilajatu,  
Shasyaka, Chapala, Rasaka

1. Abhraka
2. Vaikranta
3. Makshika
4. Vimala
5. Shilajatu
6. Shasyaka
7. Chapala
8. Rasaka

The same author has enumerated 8 drugs as Maharasa, **Abhraka** and **Shilajatu** are replaced by **Anjana and Hingula** (RRS 6/50)



ABHRKA (MICA)



VAIKRANTA (FLOURSPAR)



MAKSHIKA (COPPER PYRITE)



VIMALA (IRON PYRITE)



SHILAJATU (BITUMEN)

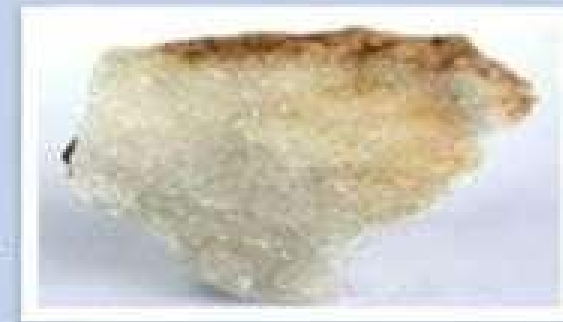


SHASYAKA (COPPER SULPHATE)



← CHAPALA (BISMUTH)

RASKA (CALAMINE) →



# WORD DERIVATION -BHESHAJYA KALPANA....

□ **भैषज्य कल्पना की निरुक्ति-** निष्पत्ति" भेष भये' धात् से "' भेषति भेषते वा" सेह हयी है। भेष धातु से स्वार्थ में अण प्रत्यय लगने से भैषज्य कल्पना दो शब्दोंसे मिलकर बना है- भैषज्य और कल्पना ।

□ **भैषज्य की परिभाषा**

**भेषं रोग भयं जयति येन इति भेषजम् तस्य भावः कर्मवा भैषज्यम्।**

जिसके द्वारा रोग भय को दूर किया जाता है, उसे भेषज करा गया है। भेषज का भाव या कर्म ही भैषज्य हलाता है।

**भेषज्यन्ति चिकित्सन्ति रोगान् नर्वतयन्ति वा अनेनति भेषजम्। भेषजमेव भैषज्यम्।** जिसके द्वारा रोगों की चिकित्सा की जाती है, रोगोंको दूर किया जाता है, से भेषन करा माहै।अ को ही भैषज्य कहा गया है।

□ **कल्पना की निरुक्ति**

"कृप साम्थ्वे" धातु में अच्एवं घञ् प्र्य लगाने से कल्पना शब्द की निमति हुंहे।

**कल्पना की परिभाषा-** जिन प्रक्रियाओं के द्वारा द्रव्य में रोगनाशक राक्ति उत्पन्न की जाती है, उसे "कल्प या कलन" कहो है। वह प्रक्रिया जिसके द्वारा किसी द्रव्य विशेष में विित्र कार्यों को संपादित करने की शक्ति कत्र हे। कलन हलाती है।

विभिन्न शब्दकोश कल्प के निन्न अर्थ मिलते है- कल्पनं उपयोगार्थ प्रकल्पन संस्करणमिति। चक्रपापि

1. कल्प विधि विधाने संस्कारे। 2. कल्पः शास्त्रे विधौ, न्याये, संवर्ते ब्राह्मणोदिते। मेदिनी
3. कल्पे विधि क्रमौ। अमरकोश 4. क्रमं कल्प प्रयोगाणां कल्पं तत्र प्रचक्षत।

# PRAKRIYA PARIBHASHA

## Significance of Ayurvedic Methods of Processing of Metal and Mineral Drugs

करणं पुनः स्वाभाविकानां द्रव्याणामभिसंस्कारः।  
संस्कारो हि गुणान्तराधानमुच्यते।

ते गुणास्तोयाग्निसन्निकर्षशौचमन्थनदेशकालवासनभावनादिभिः  
कालप्रकर्षभाजनादिभिश्चाधीयन्ते (२)।२२।१. रसविमानम्/126

# Object of Pharmaceutical Processing

To produce

Safe

Effective

Palatable



**Drug**

## **Object of Metal and Mineral Processing:**

To produce an edible product

powdered material

possessing therapeutic effect

-non-toxic in therapeutic dose

# Steps in preparation of Metal or Mineral powder

## 1. Prepare thin metal sheets

तीक्ष्णायसस्य पत्राणि वह्निवर्णानि साधयेत् ।  
चतुरङ्गुलदीर्घाणि तिलोत्सेधतनूनि च ॥१६॥

Caraka Samhita

तीक्ष्णलोहपत्राणि तनूनि  
तनूनि अघनानि तिलोत्सेधमात्राणि ।

Susruta Samhita

## Preparation of Metal or Mineral powder

तान्यञ्जनाभानि सूक्ष्मचूर्णानि कारयेत्।

Caraka Samhita

सूक्ष्मचूर्णानि कारयेद्धनतान्तवपरिस्रावितानि

Susruta Samhita

Shodhan: Object: To prepare product amenable to incineration  
or ready to use powdered material

Procedure involves

Quenching of thin metal sheets in

Vegetable oils (Sesame oil),

Buttermilk (Organic Acids: pH 6.7 to 6.9)

Cow urine (pH 7.27 to 8.71)

Fermented rice gruel (Vinegar: Acetic acid)

Horse gram (*Dolichos biflorus*)

decoction (Tannins)

# Hkouk

Levigation ? Wet grinding ? Trituration?

nōsk ; kor k l E d ~ ožp vžly qahosA  
Hkouk k/ček kar qfHk'fXHHkōukfo/kšA

nōsk ; kor k nō a, d hkw nž kaot šA  
r koček k fufnž/afHk'fXHHkōukfo/kšA

v škukanoš kōPd nēkHkšHosž %A  
l by kor ai j aekuaHkouk k/čd hfr žeAA j - fpa

fnok fnok r i s' ' kō aj k=Kj k=Kšfuok ; šA  
' kō ap.vkž r anō al Ir kgaHkoukof/kšA

Hv p Skacy kkuad k žLoj I Hkouk A  
I Hkfor aá Yí efi nØ aL; kn~cgq eZr AA p-I ad -

r koupen:žsy kga; koRd Tt yI féHeA  
dj kš fufgr aus-suð i hMæukx fi AA

## Levigation:

A process of removing lighter gangue (earthy) particles by washing in a current of water.

A process of grinding an insoluble substance to a fine powder, while wet.

The material is introduced into the mill together with water, in which the powdered substance remains suspended, and flows from the mill as a turbid liquid or thin paste, according to the amount of water

employed.

# Levigation vs Trituration

More Information Online [WWW.DIFFERENCEBETWEEN.COM](http://WWW.DIFFERENCEBETWEEN.COM)

	Levigation	Trituration
DEFINITION	Levigation is the process of decreasing the particle size of powders by triturating them with a mortar and pestle in the presence of a small amount of liquid in which the substance is insoluble	Trituration is a process useful in purifying crude chemical compounds consisting of soluble impurities
IMPORTANCE	Important in mixing or triturating a powder with a liquid in which it is insoluble to reduce the particle size	Important in reducing the particle size of powders to make a greater surface area available

Steps required in a wet grinding include:

1. Wetting

2. Charging the media mill

3. Deagglomeration

4. Wet grinding

5. Drying

y k g k u a e k j . k a j " B a l o z k a j l H L e u k A  
e f y f H e z : e a " B a x a d k n f H e A  
v f j y k g s y k g L : e k j . k a n a z c n e A A j - j - l -

j l k f n n o i k d k u a c e k k k i d a i o e A  
u s / k s u w f / k d % i k d % i k d a f g r e k s k e A A j - p w

Putra - Incineration

## End point of Puta (incineration) process

Rekhapoornatva: Finger ridge filling test: Particle size

### Physical Tests

Varitartva: Water floating test :

Role of Surface tension: Small objects will "float" on the surface of a fluid, as long as the object cannot break through and separate the top layer of water molecules.

When an object is on the surface of the fluid, the surface under tension will behave like an elastic membrane.

### Chemical Tests

Apunarbhavatva: Irrecoverability

Rekha poornatva: Finger ridge filling test:

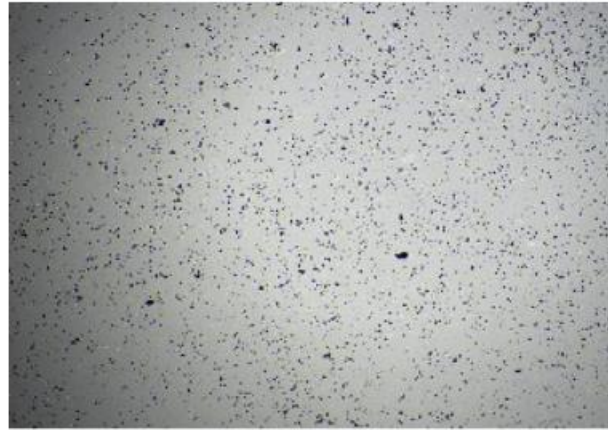
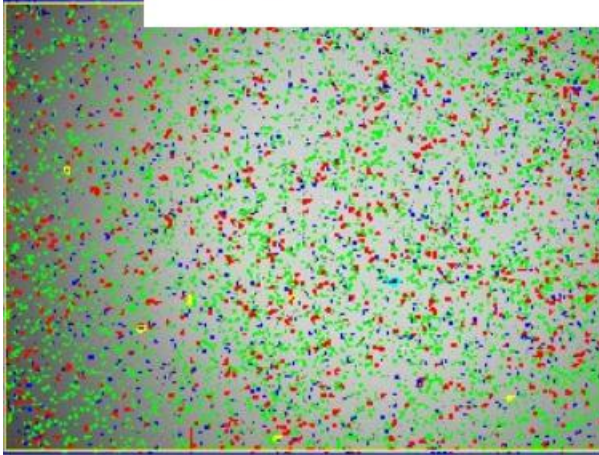
Particle size - Nanoparticle?

तान्यञ्जनाभानि सूक्ष्मचूर्णानि कारयेत्।

Caraka Samhita

सूक्ष्मचूर्णानि कारयेद्धनतान्तवपरिस्रावितानि

Susruta Samhita



# Tamra Bhasma

## Particle Sizing: Results Summary

---

Fields measured 5  
Particles count 42486  
- -

.Type	Count	d10	d50	d90	D(3,2)	D(4,3)	D(1,0)
		microns	microns	microns	microns	microns	microns
Single	40872	1.2974	2.7521	4.6777	4.1681	4.8828	2.9662
Agglomerates	1614	2.4272	5.6551	8.9885	8.6179	11.489	5.7774
Unclassified	0	0	0	0	0	0	0
All(combined)	42486	1.2974	2.901	4.9403	4.7575	6.4678	3.073

# Tamra Bhasma

STATS(Excluding: Agglomerates, Unclassified)

	Area	Aspect	Axis(Major)	Axis(Minor)	AreaEq Dia	Circularity(Eqv
	sq microns		microns	microns	microns	
Min	0.6609822	0	0.8129883	0.5748696	0.9173814	0
Max	343.7108	10.25	55.3383	17.0264	20.9195	2.5067
Mean	8.2688	1.3195	3.0678	2.1919	2.9662	1.2553
Sum	337960.9	53928.92	125386.7	89586.24	121233.5	51307.82
Std.Dev	7.9875	0.5630305	2.0562	1.1611	1.3153	0.4812433

Classes(Excluding: Agglomerates, Unclassified)

Classes	Counts	%Count	%Count(All)
#1: 0 to 2.5	15735	38.4982	1.#INF
#2: 2.5 to 5	22065	53.9856	1.#INF
#3: 5 to 10	3056	7.477	1.#INF
#4: 10 to 15	15	0.000000001	1.#INF
#5: 15 to 20	0	0	0
#6: 20 to 25	1	0.000000001	1.#INF
#7: 25 to 30	0	0	0
#8: 30 to 40	0	0	0
#9: 40 to 50	0	0	0
#10: 50 to 100	0	0	0
#11: 100Above	0	0	0

**Bhasma-Nanoparticles?**

# Tamra Bhasma

STATS(Group 1)

	Area	Aspect	Axis(Major)	Axis(Minor)	AreaEqv Dia	Circularity(Eqv
	sq microns		microns	microns	microns	
Min	0.6609822	0	0.8129883	0.5748696	0.9173814	0
Max	343.7108	10.25	55.3383	17.0264	20.9195	2.5067
Mean	8.2688	1.3195	3.0678	2.1919	2.9662	1.2553
Sum	337960.9	53928.92	125386.7	89586.24	121233.5	51307.82
Std.Dev	7.9875	0.5630305	2.0562	1.1611	1.3153	0.4812433

## BANDHANA

येन येन हि चाञ्चलयं दुर्ग्रहत्वं च नश्यति ।  
रसराजस्य सम्प्रोक्तो बंधनार्थो हि वार्तिकैः ॥  
र. र. स ११/६०

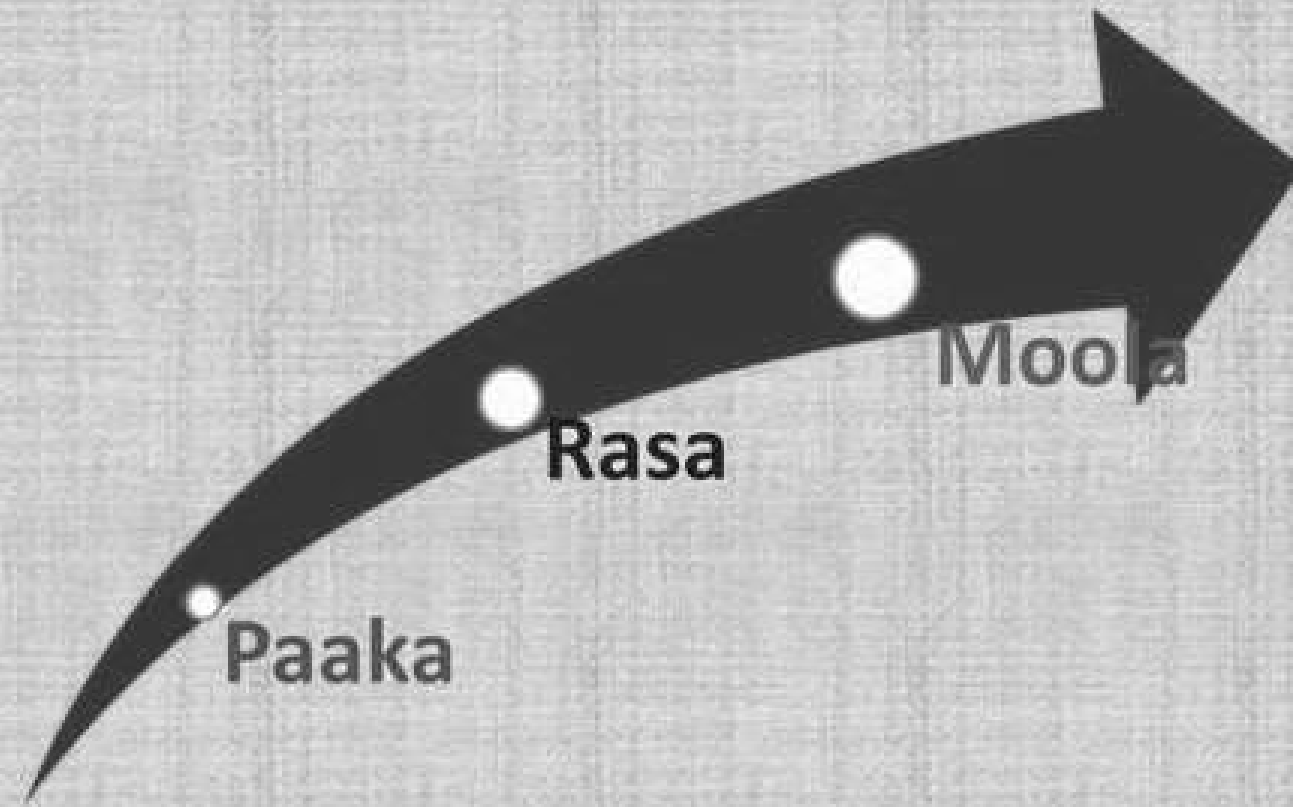
Paradha Bandhas

## Types of bandhana

According to various authors:

- 1) **Rasaarnava- 12<sup>th</sup> century- 3 types**
- 2) **Rasa Prakasha sudhakara- 13<sup>th</sup> century 4 types**
- 3) **Rasa Ratna Samuchhaya- 13<sup>th</sup> century 25 types**

# Rasaarnava



1. *Uttamo moola bandha*
2. *Madhyama rasa bandha*
3. *Adhana paaka bandha*

***Moola bandha*** also known as ***Vasana bandha***  
in which 64 types of ***moola ausadhies*** are used.

13<sup>th</sup> *Patala*

**Again of three types:-**

1. Pindika bandha
2. Druti banda
3. Sankocha banda

## **Rasa Prakasha Sudhakar**

Four types of bandha:-

- 1. Jaluka bandha- paanka bandha**
- 2. Khota bandha- like pishti**
- 3. Pota bandha- parpati**
- 4. Bhasma bandha- parada bhasma**

# Bandha sadhana

1. Moolika bandha- *uttamo moolika bandha*
2. Mani bandha- *madhyama*
3. Swarna bandha- *adhamo*
4. Naaga vanga bandha- *adhamo adhama*
5. *Druti bandha- with abhraka dhruti for deha lohakara siddhi*

## Rasa Ratna Samucchaya

In 11<sup>th</sup> chapter he has explained 25 types of bandhas. After the completion of these 26 bandhas another type *Jaluka bandha* is explained.

**25 bandhas are illustrated as-**

1. Hatha bandha
2. Aarota bandha
3. Aabhasa bandha
4. Kriyaheena bandha
5. Pistika bandha
6. Ksharabandha bandha
7. Khota bandha
8. Pota bandha
9. Kalka bandha
10. Kajjali bandha
11. Sajeeva bandha
12. Neerjeeva bandha
13. Neerbeja bandha
14. Sabeeja bandha

15. Srunkhala bandha
16. Druti bandha
17. Balaka bandha
18. Kumara bandha
19. Taruna bandha
20. Vruddha bandha
21. Murti bandha
22. Jalabandha
23. Agni bandha
24. Susanskrata bandha
25. Maha bandha

1. Hatha bandha- parada bandhana without purification causes severe diseases and death.
2. Aarota bandha- binding mercury after purification, it is meant for kshetrikarna.
3. Aabhasa bandha- subjecting mercury to incineration by adding with metals and herbs and bringing change in its form and properties.
4. Kriyaheena bandha- binding mercury with impure metals. The administration of such mercury, if followed by a pathya cause diseases.
5. Pistika bandha- mercury becomes paste like by grinding in severe hot sun light. It is used as *deepana pachana*.
6. Kshara bandha- binding of mercury with sankha, sukta, varatika useful as appetiser and alleviates pain.
7. Khota bandha-the process by which the mercury becomes bolus and evaporates only on repeated heating . In this form it alleviates all the diseases much faster than normal form.

8. Pota bandha- parpati, useful in disease of children
9. Kalka bandha- after completion of the procedures like svedana etc mercury becomes like paste. It gives rise to results that are pronounced in yoga.
10. Kajjali bandha- mercury when added with sulphur and ground to very fine black powder like that of collyrium.
11. Sajeeva bandha- the process in which mercury evaporates on heat even after making into bhasma. On administration it does not show either the quality of of bhasma nor alleviate old age and diseases.
12. Neerjeeva bandha- after absorbing mica or sulphur, if mercury is made into bhasma, it becomes best of all medicines. Such mercury roots out all diseases.
13. Neerbeeja bandha- when mercury is added with  $\frac{1}{4}$  quantity of gold, ground along with sulphur to make pisti, latter incinerated along with equal quantity of sulphur to make bhasma .It cures all diseases.

14. Sabeeja bandha- mercury is ground along with extract of mica and gold; silver and magnetite and later subjected to incineration after adding six times of sulphur. It shows *vipula prabhava*.
15. Shrunkhala bandha- mixture of two types of mercury bhasmas i.e one prepared with diamond etc. and the other with herbs. It is useful for both alchemy and therapeutic purposes. It is known only to lord shiva.
16. Druti banda- mercury is added with metallic liquids in the processo bhaya druti and either bound or made into bhasma. A dose of a  $\frac{1}{4}$  of mustard roots out all diseases that are difficult to cure.
17. Balaka bandha- parada jarita with equal quantity of abhraka when used with suitable drugs alleviates diseases associated with complications and bad prognosis.

18. Kumara bandha- dwiguna abhraka jarita mercury cures all the papjanya karma diseases act as rejuvenator when taken in dose of 1 husked grain for 21 days

19. Taruna bandha- mercury digested with four times of abhraka is best for rasayana purpose. It cures all the diseases and act as restorative and gives strength and energy.

20. Vriddha bandha- mercury when digests 6 times of abhraka becomes stable on fire and useful for dehavada and lauha vada.

21. Moorti bandha- when mercury is bounded and made to be stable on fire with the help of fire without abhraka. This is not depleted on fire and also gives much less results on internal administration.

22. Jala bandha- mercury bounded with help of *Shilatoya*. it nullifies old age, disease and death.

23. Agni bandha- mercury alone or along with other drugs, if made into a pill after subjecting it to heat. It is useful for khetchiri siddhi.

24. Susamskrata bandha- Vishnukranta, Somalata, kumbhi, kanaka, mulaka, vrischika, hasti sundi, hamspadi, and aasuri are made into paste by grinding with urine of undelivered cow. Mercury is added to this paste, ground and heated in valuka yantra. Later it is again added with metals bhasmas and subjected to murcchana by subjecting to suitable heat in suitable apparatus.

25. Mahabandha- mercury is added either with gold or silver and blown in the furnace to make a pill. It does not deplete on further heating. This looks solid and does not leave black mark on rubbing against hard surfaces and melts on heating without emitting any smell.

26. Jaluka bandha- this type of binding is meant for application into the vagina of those women who are more powerful in sexual desire than man. It is used prior to intercourse. Jaluka means leech since mercury looks like leech after binding so names as jaluka. The length of jaluka is prescribed as per the age of the female i.e.

- Balya- 8 angulas
- Yovana- 10 angulas
- Pragalbha-12 angulus

Methods- near about 10 methods are mentioned by RRS for this.  
Few are as follows-

1. Mercury- 1 part  
Gold -half of mercury  
Lead - one fourth of mercury

Later it added with following drugs in 1/16<sup>th</sup> quantity-

1. Castor oil
2. Seeds or bark of bombax malabaricum
3. Cannabis indica
4. Cordia dichotoma
5. Celeastus panniculatus
6. Zyzypus jujuba seeds
7. Sesame seeds
8. Cinnamomum zeylanicum

Grinding with these mercury becomes leech like.

Such Jaluka is added with herbs like kapikachu, bakuchi oil, camphor, borax, damanaka 1/16 to parada and triturated with Pippali kwatha in tapta khlwa yantra. It is then given the shape of Jaluka.

**Thanks !**